



Epsin 1 Polyclonal Antibody

Catalog No	YP-Ab-03859
Isotype	IgG
Reactivity	Human;Mouse;Rat
Applications	WB;ELISA
Gene Name	EPN1
Protein Name	Epsin-1
Immunogen	Synthesized peptide derived from Epsin 1 . at AA range: 140-220
Specificity	Epsin 1 Polyclonal Antibody detects endogenous levels of Epsin 1 protein.
Formulation	Liquid in PBS containing 50% glycerol, 0.5% BSA and 0.02% sodium azide.
Source	Polyclonal, Rabbit,IgG
Purification	The antibody was affinity-purified from rabbit antiserum by affinity-chromatography using epitope-specific immunogen.
Dilution	Western Blot: 1/500 - 1/2000. ELISA: 1/40000. Not yet tested in other applications.
Concentration	1 mg/ml
Purity	≥90%
Storage Stability	-20°C/1 year
Synonyms	EPN1; Epsin-1; EH domain-binding mitotic phosphoprotein; EPS-15-interacting protein 1
Observed Band	85kD
Cell Pathway	Cytoplasm . Cell membrane ; Peripheral membrane protein . Nucleus . Membrane, clathrin-coated pit . Associated with the cytoplasmic membrane at sites where clathrin-coated pits are forming. Colocalizes with clathrin and AP-2 in a punctate pattern on the plasma membrane. Detected in presynaptic nerve terminals and in Golgi stacks. May shuttle to the nucleus when associated with ZBTB16/ZNF145 (By similarity). .
Tissue Specificity	Brain,Epithelium,Mammary gland,
Function	domain:The DPW repeat domain is involved in AP2A2 and clathrin binding.,domain:The NPF repeat domain is involved in EPS15 binding.,function:Binds to membranes enriched in phosphatidylinositol-4,5-biphosphate (PtdIns(4,5)P2). Modifies membrane curvature and facilitates the formation of clathrin-coated invaginations (By similarity). Regulates receptor-mediated endocytosis.,online information:The bubble's bend -Issue 42 of January 2004,PTM:Phosphorylated on serine and/or threonine residues in mitotic cells. Phosphorylation reduces interaction with REPS2, AP-2 and the membrane fraction. Depolarization of synaptosomes results in dephosphorylation.,PTM:Ubiquitinated.,similarity:Belongs to the epsin family.,similarity:Contains 1 ENTH (epsin N-terminal homology)



domain.,similarity:Contains 2 UIM (ubiquitin-interacting motif) repeats.,subcellular location:Associated with the cytoplasmic membrane

Background

This gene encodes a member of the epsin protein family. The encoded protein binds clathrin and is involved in the endocytosis of clathrin-coated vesicles. Loss of function of this gene is associated with reduced tumor growth and progression in certain cancer types. [provided by RefSeq, Mar 2016],

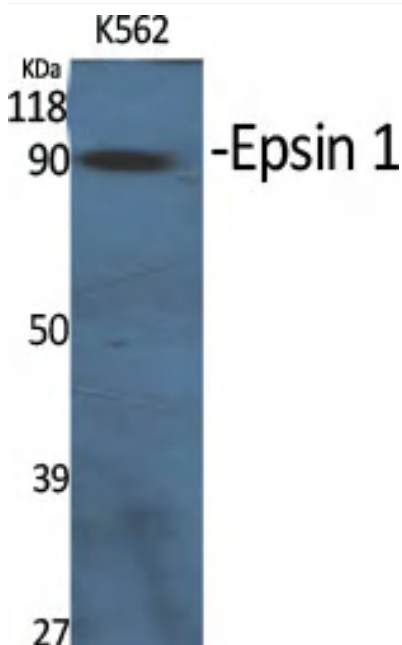
matters needing attention

Avoid repeated freezing and thawing!

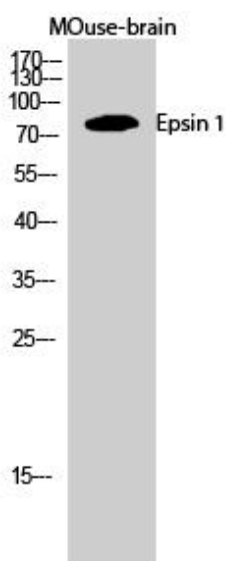
Usage suggestions

This product can be used in immunological reaction related experiments. For more information, please consult technical personnel.

Products Images



Western Blot analysis of various cells using Epsin 1 Polyclonal Antibody diluted at 1:1000



Western Blot analysis of MOuse-brain cells using Epsin 1 Polyclonal Antibody diluted at 1:1000